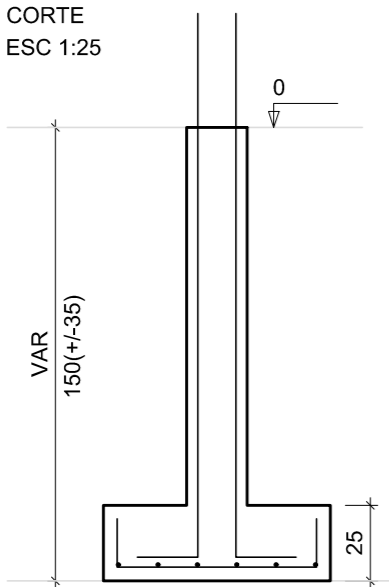
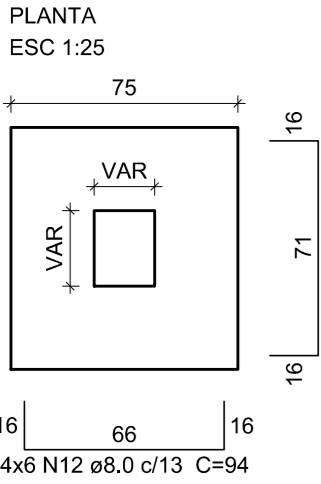
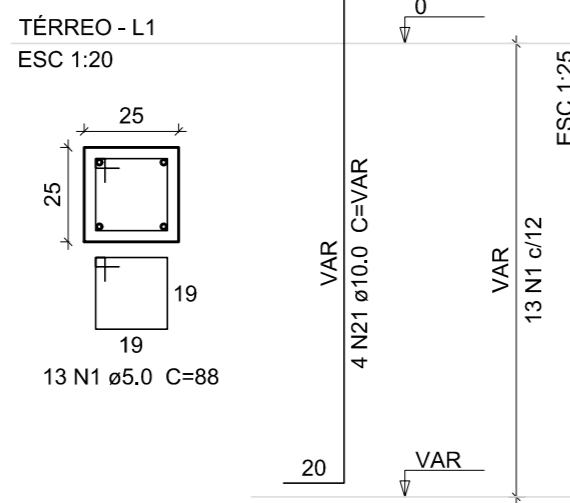


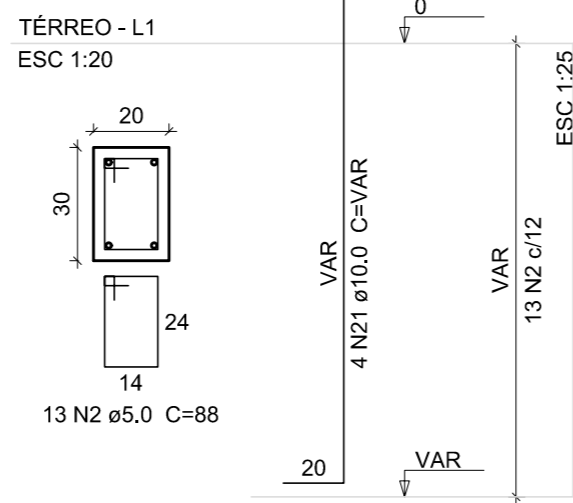
S12=S13=S16=S18



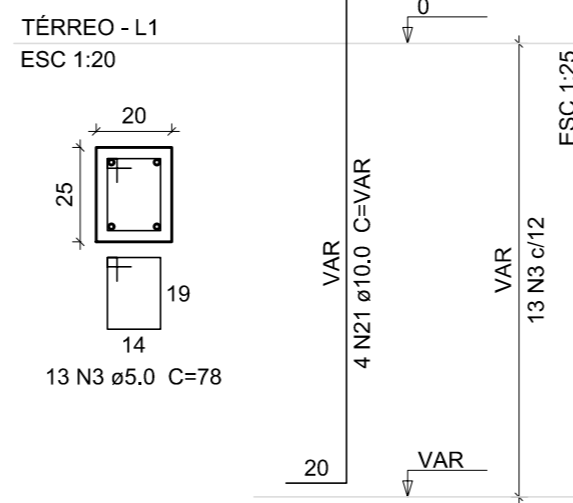
P12



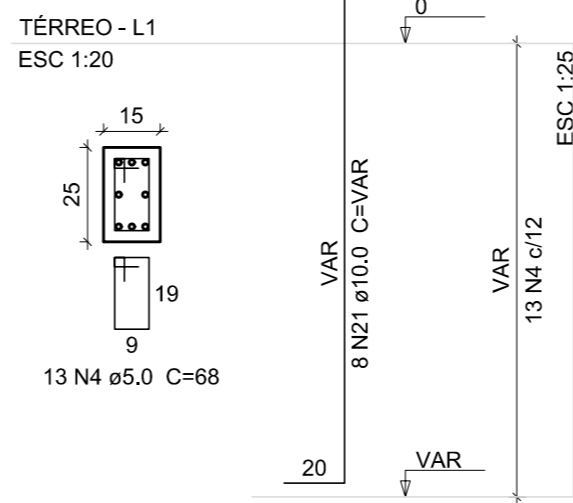
P13



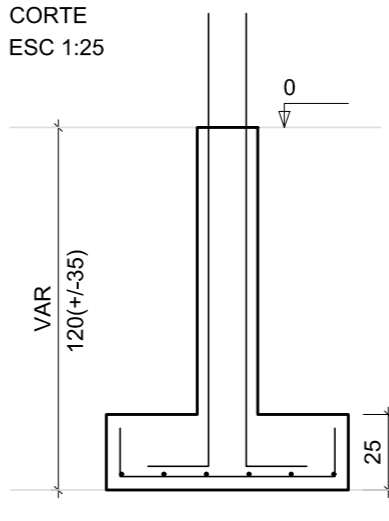
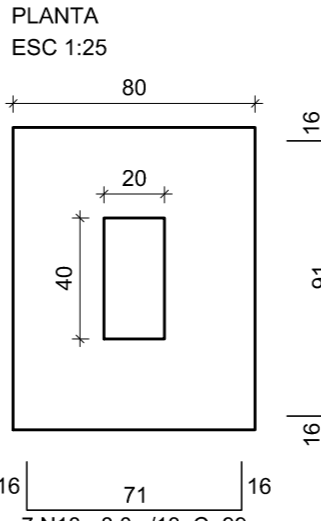
P16



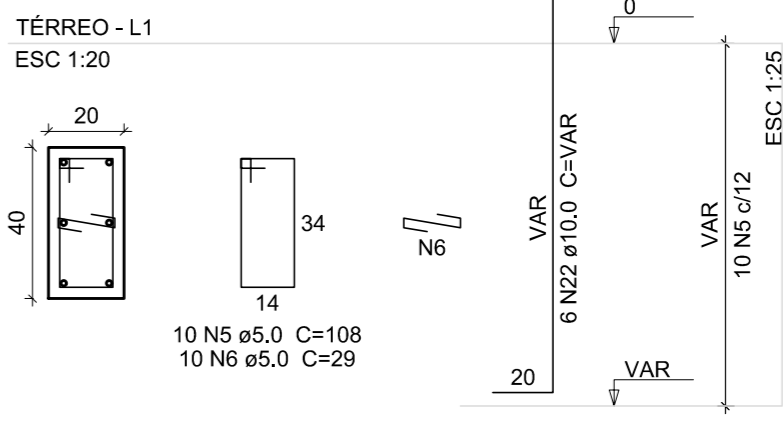
P18



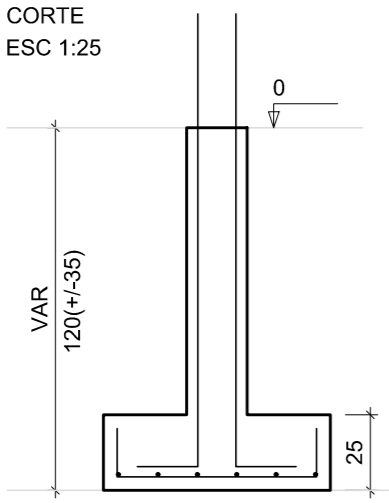
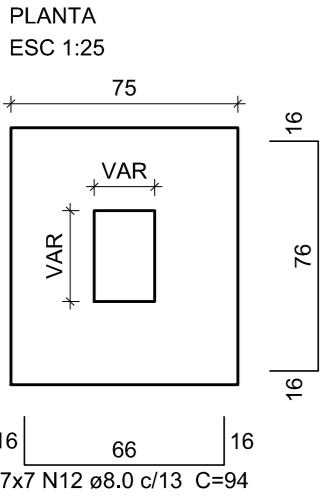
S55



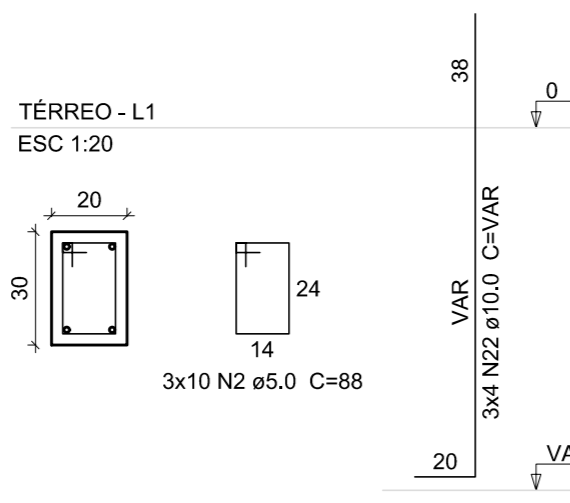
P55



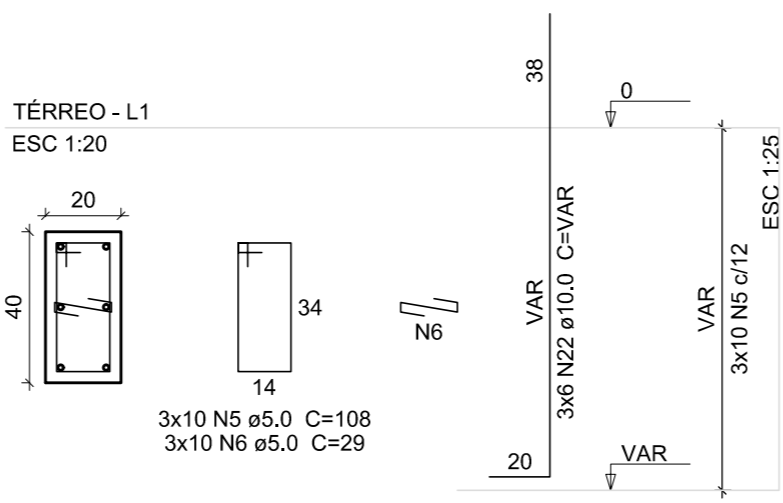
S20=S35=S36=S37=S39=S44=S49



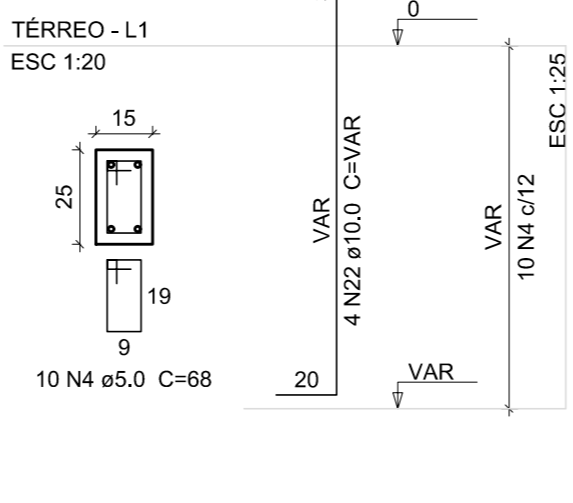
P20=P39=P49



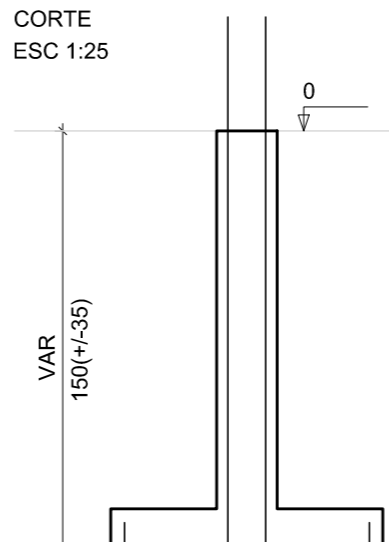
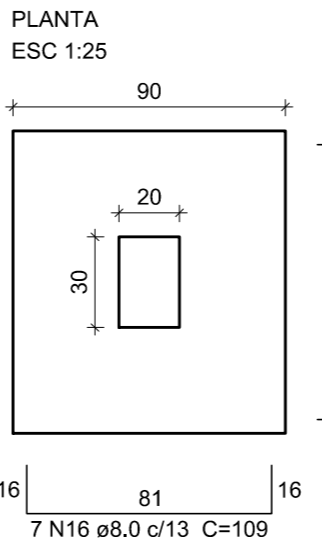
P35=P36=P44



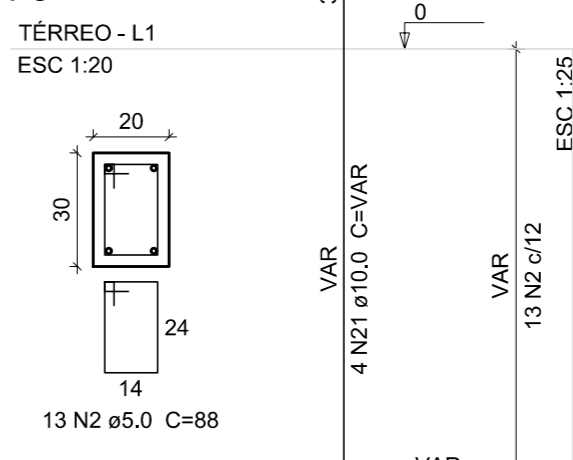
P37



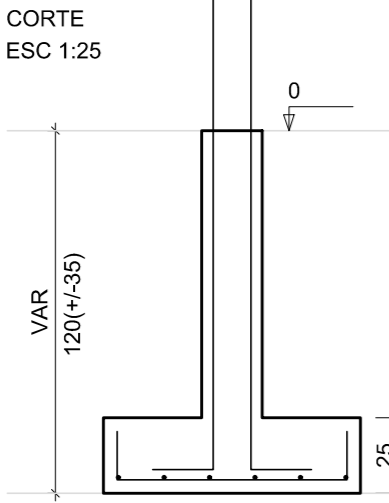
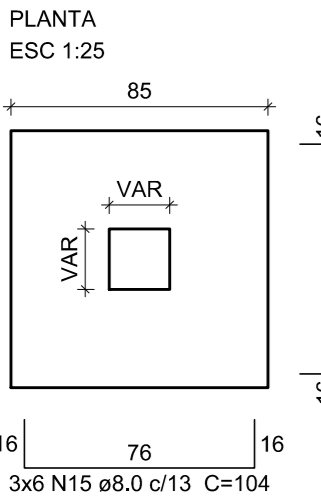
S5



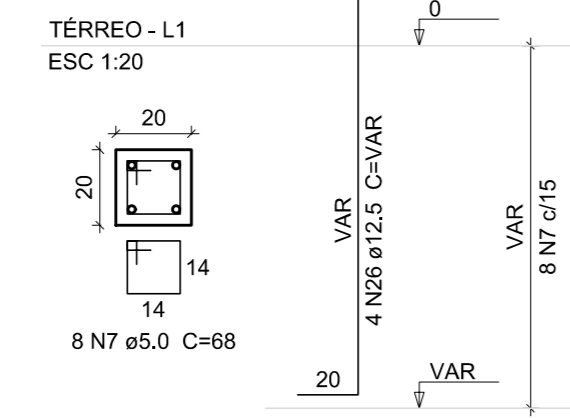
P5



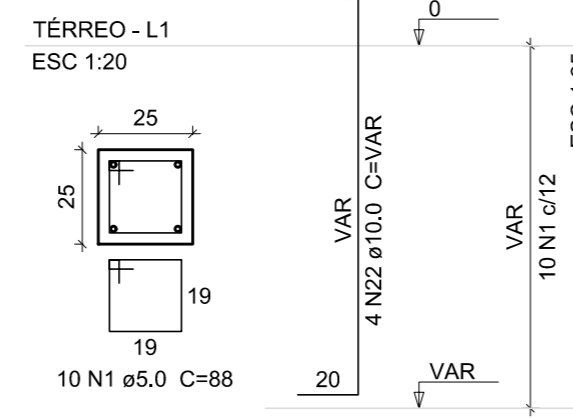
S24=S46=S56



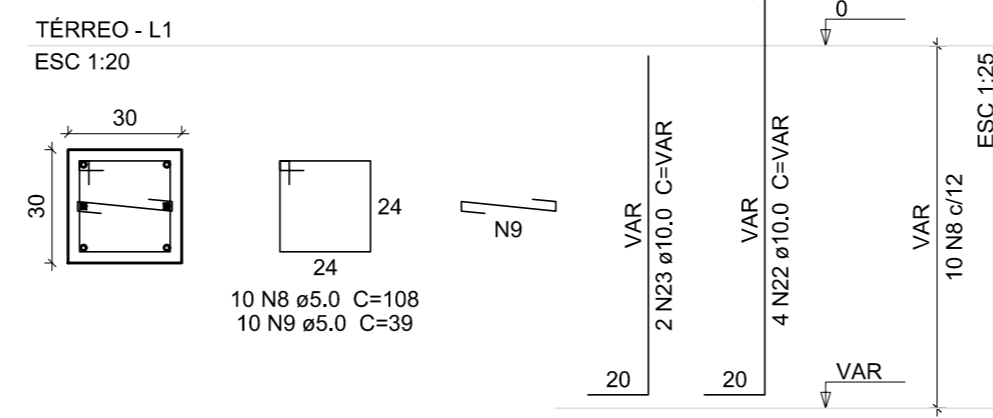
P24



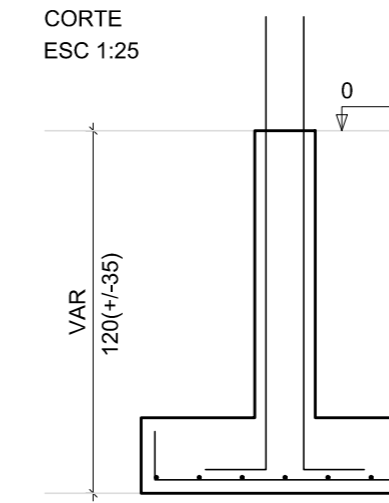
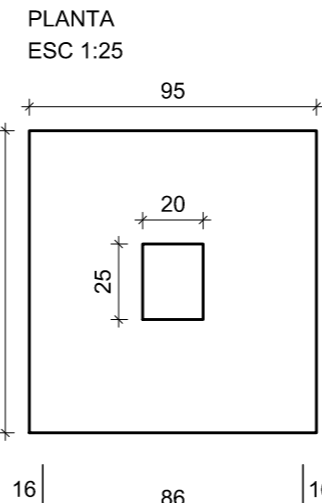
P46



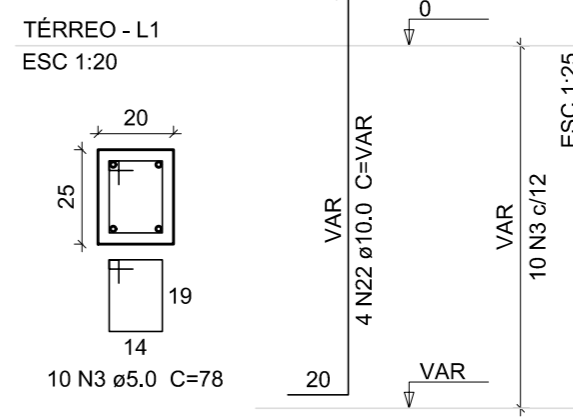
P56



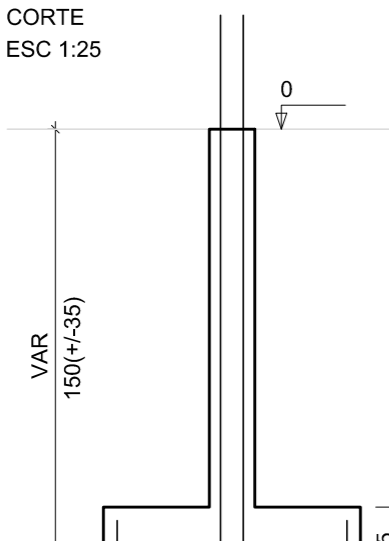
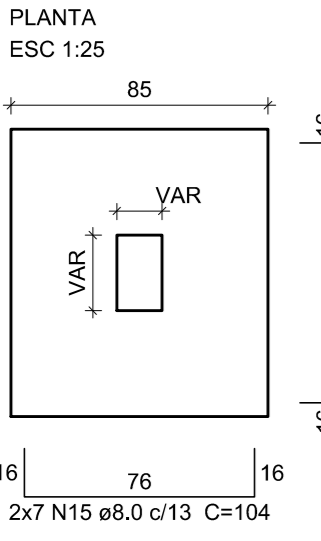
S43



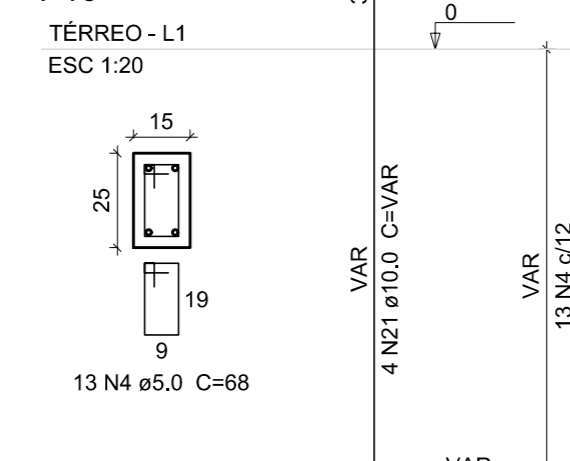
P43



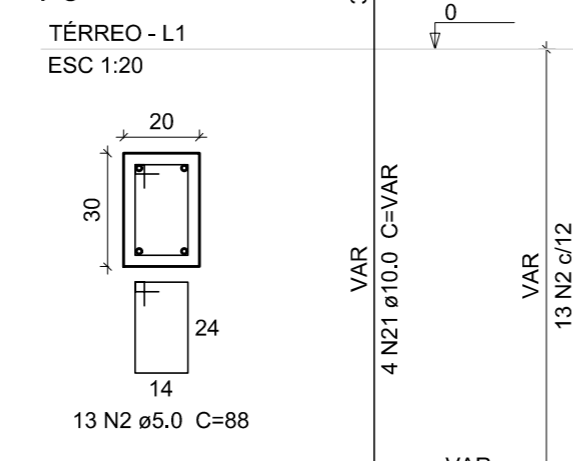
S8=S10



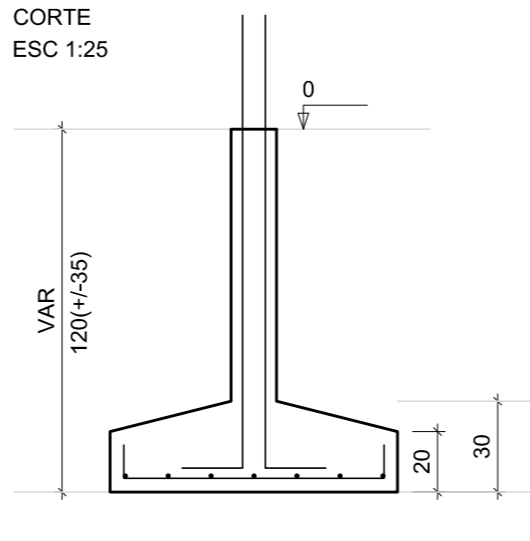
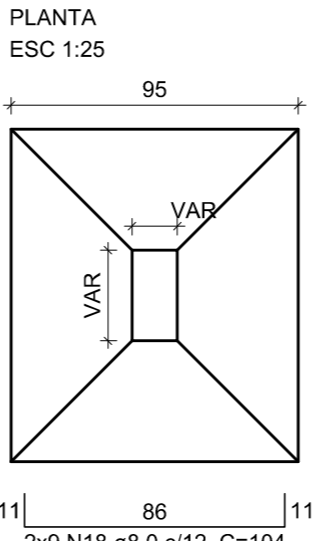
P10



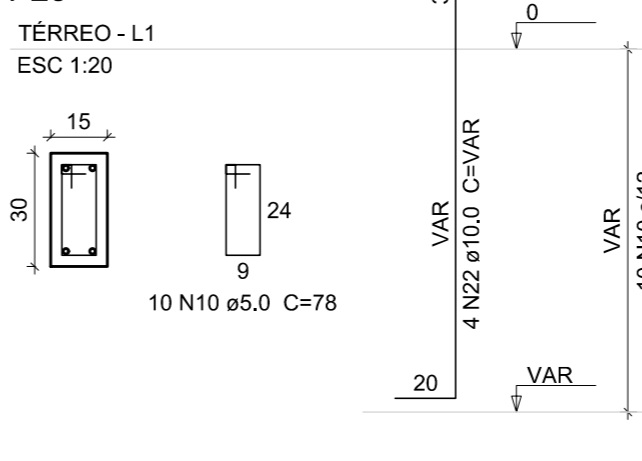
P8



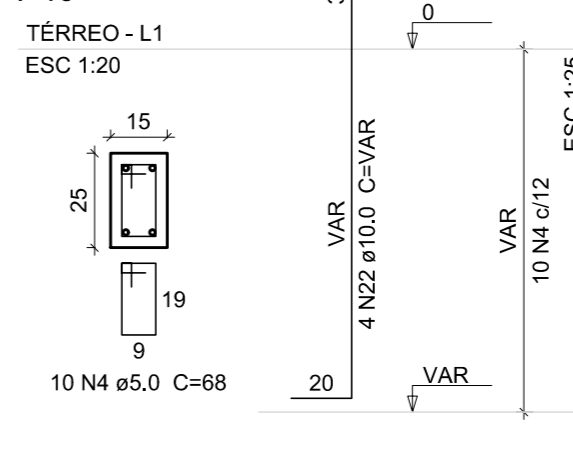
S25=S40



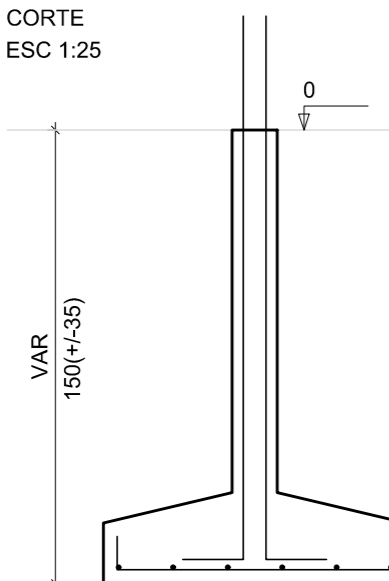
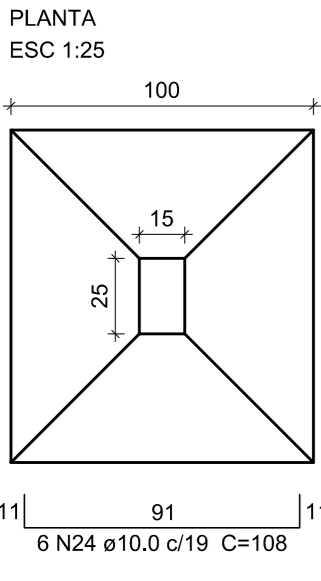
P25



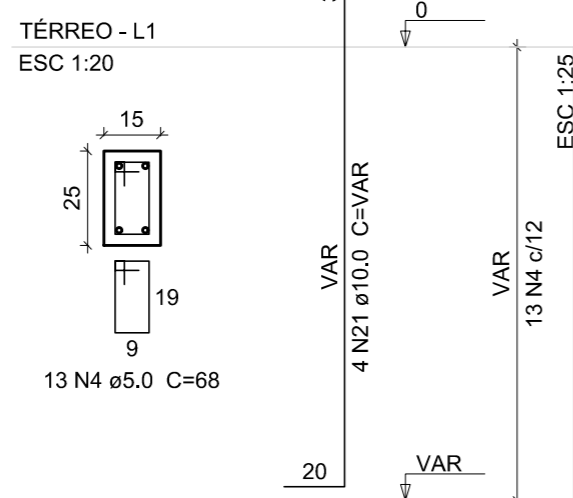
P40



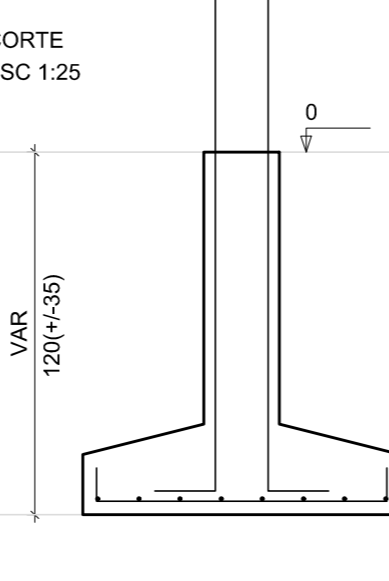
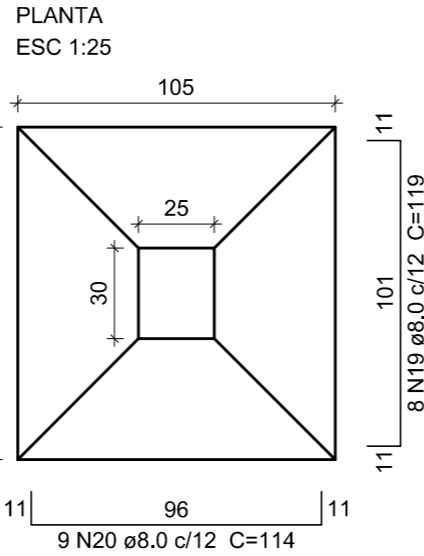
S11



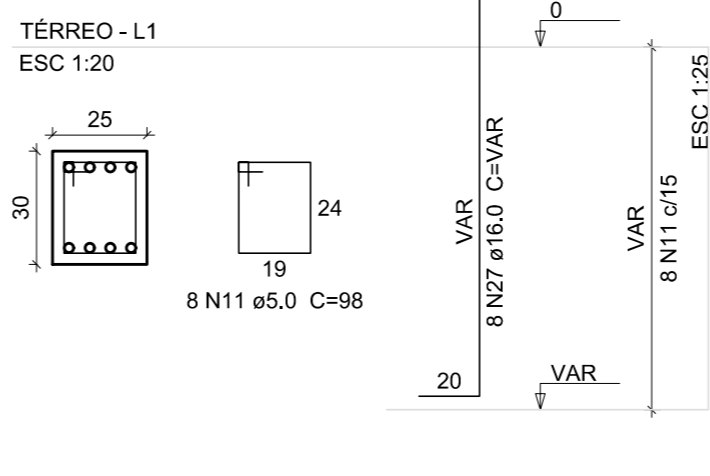
P11



S34



P34



Relação do aço

AÇO	N	DIAM (mm)	QUANT	C.UNIT (cm)	C.TOTAL (cm)
CA60	1	5,0	23	88	2024
	2	5,0	69	88	6072
	3	5,0	23	78	1794
	4	5,0	59	68	4012
	5	5,0	40	108	4320
	6	5,0	40	29	1160
	7	5,0	8	68	544
	8	5,0	10	108	1080
	9	5,0	10	39	390
	10	5,0	10	78	780
CA50	11	5,0	8	98	784
	12	8,0	73	94	6862
	13	8,0	31	99	3069
	14	8,0	20	119	2380
	15	8,0	92	104	9568
	16	8,0	7	109	763
	17	8,0	19	114	2166
	18	8,0	18	104	1872
	19	8,0	22	119	2618
	20	8,0	9	114	1026
	21	10,0	36	VAR	VAR
	22	10,0	60	VAR	VAR
	23	10,0	2	VAR	VAR
	24	10,0	6	108	648
	25	10,0	6	118	708
	26	12,5	4	VAR	VAR
	27	16,0	8	VAR	VAR

Resumo do aço

AÇO	DIAM (mm)	C.TOTAL (m)	PESO (kg)
CA50	8,0	303,3	119,7
	10,0	192,1	118,4
	12,5	7,2	6,9
	16,0	15,4	24,2
CA60	5,0	229,6	35,4
PESO TOTAL (kg)			
CA50	269,3		
CA60	35,4		

Volume de concreto (C-25) = 6.11 m³  
Área de forma = 48.53 m²

Prefeitura Municipal de

**Rolante**

obra: Pavilhão das Cuqueiras

local: Rua Júlio Kohlrausch, 524 - Rolante/RS

prancha: Estrutural - Produção e vendas - Detalhamento das fundações (2/3) nº: 04/30

extensão/área: 665,10m² escala: indicada unidade: centímetro data: FEV./2016



Ademir Gomes Gonçalves  
prefeito municipal

Luciana Gabriele Renck  
eng. civil - CREA RS 193.127

Av. Getúlio Vargas, 110 | Centro | Rolante/RS | CEP 95690-000  
(51) 3547.1188 | www.prefrolante.com.br